



 **KLISYRI**<sup>®</sup>

tirbanibulin ointment

FIELD THERAPY REDEFINED

DISCOVER KLISYRI<sup>®</sup>:  
THE MODERN ACTINIC  
KERATOSIS (AK) TREATMENT

5

**questions** and answers about  
your **5-day topical treatment**

Not actual patient. Results may vary.

**IMPORTANT SAFETY INFORMATION**

**Important: KLISYRI is for use on the skin only (topical). Do not use KLISYRI in, around, or near your eyes, mouth or lips.**

**What is KLISYRI?**

KLISYRI is a prescription medicine used on the skin to treat actinic keratosis on the face or scalp. It is not known if KLISYRI is safe and effective in children less than 18 years of age.

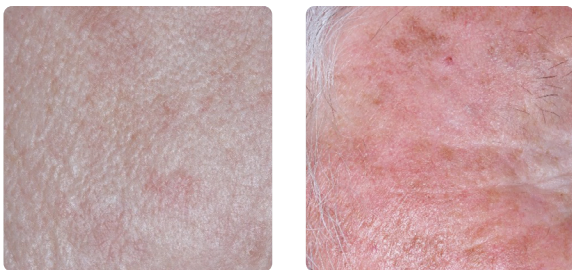
**For more information on KLISYRI<sup>®</sup>, please see Important Safety Information throughout and on pages 10-11, and click to see [full Prescribing Information](#).**

# 1

## WHAT IS ACTINIC KERATOSIS (AK) AND WHY SHOULD I TREAT IT?

**AK is a skin condition caused by exposure to sunlight over time.**

AK often appears as red, light or dark tan, white, pink, or flesh-toned spots on the skin that can be dry, scaly, or rough—these are known as AK lesions



Above photos show typical actinic keratosis lesions before treatment.



It is estimated that more than **40 million Americans** develop AK lesions each year

### **IMPORTANT SAFETY INFORMATION (CONTINUED)**

**Before using KLISYRI, tell your healthcare provider about all of your medical conditions, including if you:**

- are being treated or have been treated for actinic keratosis with any other medicine, procedure, or surgery. You should not use KLISYRI until your skin has healed from other treatments.

**For more information on KLISYRI®, please see Important Safety Information throughout and on pages 10-11, and click to see [full Prescribing Information](#).**

## What to consider when treating AK

Topical treatments to manage AK lesions are well-established and widely prescribed, but it's important to choose the right one for you



Some AK treatments must be applied for weeks and require application multiple times a day



Many topical AK treatments can cause phototoxicity, an allergic reaction triggered by sunlight



Some AK treatments lead to more severe skin reactions than others, which can be painful, uncomfortable, and unsightly

**Finding a topical medication that provides effective lesion clearance is a priority**—and choosing a treatment that's short, convenient, and doesn't prevent you from being outdoors is important too



### IMPORTANT SAFETY INFORMATION (CONTINUED)

**Before using KLISYRI, tell your healthcare provider about all of your medical conditions, including if you:**

- have other skin problems in the treatment area

**For more information on KLISYRI®, please see Important Safety Information throughout and on pages 10-11, and click to see [full Prescribing Information](#).**

# 2

## WHAT IS KLISYRI® (TIRBANIBULIN) AND WHY DID MY DOCTOR PRESCRIBE IT?

**KLISYRI® is an FDA-approved topical ointment used on the skin to treat AK on the face or scalp.**



### Your doctor chose KLISYRI® to treat your AK because it's:

**AN EFFECTIVE TREATMENT** you can count on, with many patients experiencing complete (100%) clearance of lesions:

**5x** 5x more KLISYRI® patients achieved **complete (100%) clearance** of their AK lesions than placebo patients\*

**61%** Up to 61% of KLISYRI® patients saw **complete clearance** (100%) of lesions on the face†

FDA: Food and Drug Administration.

\*Based on a pooled analysis of data from two Phase 3 studies with KLISYRI®. 100% AK clearance rates were 49% for KLISYRI® vs 9% for vehicle. In Study 1, 100% AK clearance rates were 44% KLISYRI® vs 5% vehicle; in Study 2, 100% AK clearance rates were 54% KLISYRI® vs 13% vehicle.

†In Study 1, 60 out of 119 (50%) of patients saw complete clearance of lesions on the face. In Study 2, 73 out of 119 (61%) of patients saw complete clearance of lesions on the face.

Individual results may vary.

### **IMPORTANT SAFETY INFORMATION (CONTINUED)**

**Before using KLISYRI, tell your healthcare provider about all of your medical conditions, including if you:**

- are pregnant or plan to become pregnant. It is not known if KLISYRI can harm your unborn baby.

**For more information on KLISYRI®, please see Important Safety Information throughout and on pages 10-11, and click to see [full Prescribing Information](#).**







### **A MODERN APPROACH TO THE TREATMENT OF AK**

- KLISYRI® treatment is just 5 days, and it comes in precise, pre-measured packets that eliminate guesswork and help deliver the right dose—every time



### **DEMONSTRATED SAFETY AND TOLERABILITY PROFILE**

- The most common side effects with KLISYRI® were local skin reactions, including itching and pain in the treatment area



### **LOW RATES OF SEVERE SKIN REACTIONS**

- Although skin reactions can be common, they are mostly mild to moderate. Fewer than 1 in 10 patients had severe local skin reactions



### **KLISYRI® DOESN'T PREVENT YOU FROM BEING OUTDOORS**

- Healthy participants using KLISYRI® had no reactions due to sun exposure<sup>‡</sup>

**Learn more about local skin reactions and see photos of what to expect on page 9**

<sup>‡</sup>Clinical studies in healthy subjects demonstrated KLISYRI® did not cause contact sensitization, phototoxic skin reactions, or photoallergic skin reactions.

## **IMPORTANT SAFETY INFORMATION (CONTINUED)**

**Before using KLISYRI, tell your healthcare provider about all of your medical conditions, including if you:**

- are breastfeeding or plan to breastfeed. It is not known if KLISYRI passes into your breast milk. Talk to your healthcare provider about the best way to feed your baby during treatment with KLISYRI.

**For more information on KLISYRI®, please see Important Safety Information throughout and on pages 10-11, and click to see [full Prescribing Information](#).**



# 3

## HOW DO I SAVE ON MY KLISYRI® (TIRBANIBULIN) PRESCRIPTION?



Your doctor sends your KLISYRI® prescription electronically to the specialty pharmacy. There's no paper prescription



Commercially insured patients may pay as low as **\$25** if covered by insurance, and **\$95** if not covered by insurance.\* Not sure if you qualify for savings? Ask the specialty pharmacy when they call



Click to access co-pay card



The specialty pharmacy calls you—likely from a toll-free number. **Be sure to pick up this call.** Your KLISYRI® prescription cannot be filled until they speak with you



Your KLISYRI® prescription is conveniently shipped to your door

Cash option available to eligible insured Medicare Part D patients.†

**If you don't have (or opt not to use) commercial insurance, GoodRx® provides an additional option for savings‡**



\*Eligible patients with private health insurance only (non-government) may pay as low as \$25. Patients who do not have coverage for KLISYRI® under their private health insurance may pay \$150 at a retail pharmacy or \$95 at a pharmacy within the Almirall Advantage network. Insured patients who elect not to use their plan's coverage for KLISYRI® pay \$95 at a pharmacy within the Almirall Advantage Network. Terms and conditions apply. Your available savings may vary and are subject to maximum benefit limits.

†Eligibility criteria and participation terms and conditions apply. Eligible patients must agree to purchase KLISYRI® without using their insurance. Only available at Almirall Advantage Network pharmacies.

‡GoodRx® is not insurance but may be used instead of insurance.

**For more information on KLISYRI®, please see Important Safety Information throughout and on pages 10-11, and click to see [full Prescribing Information](#).**



# 4

## HOW DO I APPLY KLISYRI® (TIRBANIBULIN)?

1



Open one KLISYRI® (tirbanibulin) ointment packet

2



Place ointment on finger

3



Apply ointment evenly as prescribed

4



Wash hands with soap and water immediately after application and discard the packet after use, even if you have not used the entire packet



### 5 days, 5 packets of ointment

Your KLISYRI® prescription will contain 5 packets of ointment. Use one packet daily for 5 days in a row

- KLISYRI® should not be used if your skin is not healed from any previous medicine, procedure, or surgical treatment
- Use only the amount of KLISYRI® needed to completely and evenly cover the treatment area

### IMPORTANT SAFETY INFORMATION (CONTINUED)

Tell your healthcare provider about all the medicines you take, including prescription and over-the-counter medicines, vitamins and herbal supplements.

For more information on KLISYRI®, please see Important Safety Information throughout and on pages 10-11, and click to see [full Prescribing Information](#).

# 5

## WHAT TYPE OF SKIN REACTIONS COULD I EXPECT FROM TREATMENT?

### **KLISYRI® (tirbanibulin) offers established safety and tolerability: Most local skin reactions are mild to moderate**

- In clinical trials, the most common side effects with KLISYRI® were local skin reactions, including itching and pain in the treatment area
- Although most local skin reactions were mild to moderate, skin reactions can also be severe. In clinical trials, fewer than 1 in 10 patients had severe local skin reactions. (See images on the next page)
- No patients withdrew from the trials due to adverse reactions



**CALL YOUR HEALTHCARE PROVIDER** if you develop any local skin reactions, including redness, flaking or scaling, crusting, or swelling that is severe, or if you get blisters, peeling, pus, ulcers, or breakdown of your skin

#### **IMPORTANT SAFETY INFORMATION (CONTINUED)**

##### **How should I use KLISYRI?**

- Use KLISYRI as your healthcare provider tells you to. KLISYRI is for skin use only.

**For more information on KLISYRI®, please see Important Safety Information throughout and on pages 10-11, and click to see [full Prescribing Information](#).**



## Photos of skin reactions to KLISYRI® (tirbanibulin) treatment in clinical trials

Although skin reactions can be common, they are mostly mild to moderate. Fewer than 1 in 10 patients had severe local skin reactions

### MILD



### MODERATE



### SEVERE



### IMPORTANT SAFETY INFORMATION (CONTINUED)

#### How should I use KLISYRI?

- Apply KLISYRI to evenly cover the treatment area(s) on the face or scalp 1 time a day for 5 days in a row (consecutive) using 1 single dose packet with each application. Do not apply KLISYRI to other areas.

For more information on KLISYRI®, please see Important Safety Information throughout and on pages 10-11, and click to see [full Prescribing Information](#).

# IMPORTANT SAFETY INFORMATION

**Important: KLISYRI is for use on the skin only (topical). Do not use KLISYRI in, around, or near your eyes, mouth or lips.**

## **What is KLISYRI?**

KLISYRI is a prescription medicine used on the skin to treat actinic keratosis on the face or scalp. It is not known if KLISYRI is safe and effective in children less than 18 years of age.

**Before using KLISYRI, tell your healthcare provider about all of your medical conditions, including if you:**

- are being treated or have been treated for actinic keratosis with any other medicine, procedure, or surgery. You should not use KLISYRI until your skin has healed from other treatments.
- have other skin problems in the treatment area.
- are pregnant or plan to become pregnant. It is not known if KLISYRI can harm your unborn baby.
- are breastfeeding or plan to breastfeed. It is not known if KLISYRI passes into your breast milk. Talk to your healthcare provider about the best way to feed your baby during treatment with KLISYRI.

Tell your healthcare provider about all the medicines you take, including prescription and over-the-counter medicines, vitamins and herbal supplements.

## **How should I use KLISYRI?**

- Use KLISYRI as your healthcare provider tells you to. KLISYRI is for skin use only.
- Apply KLISYRI to evenly cover the treatment area(s) on the face or scalp 1 time a day for 5 days in a row (consecutive) using 1 single dose packet with each application. Do not apply KLISYRI to other areas.
- Do not use more KLISYRI than you need to cover the treatment area. Using too much KLISYRI, or using it too often, or for too long can increase your chances of having a severe skin reaction or other side effects.
- Do not cover the treatment area with a dressing after application of KLISYRI. Irritation of the skin may happen if a dressing is applied to the treatment area.

**For more information on KLISYRI®, please see Important Safety Information throughout and on pages 10-11, and click to see [full Prescribing Information](#).**



## How should I use KLISYRI? (continued)

- Do not get KLISYRI in, around, or near your eyes. Do not touch your eyes while you are applying KLISYRI
  - Wash your hands right away with water and soap after applying KLISYRI. After applying KLISYRI, be careful to keep KLISYRI on the treated area from coming into contact with your eyes. Irritation may happen if you get KLISYRI in your eyes.
  - If you accidentally get KLISYRI in your eyes, flush them with water and get medical care as soon as possible. See, “What are the possible side effects of KLISYRI?”
- Do not get KLISYRI in, around, or near your mouth or lips.
- Avoid washing and touching the treated area for approximately 8 hours after application of KLISYRI. After 8 hours, you may wash the area with a mild soap and water.
- Avoid transferring the product to other areas after application.
- Throw away any open packet of KLISYRI after use even if there is medicine still left in it.

## What are the possible side effects of KLISYRI?

KLISYRI may cause serious side effects, including:

- Eye irritation can happen if KLISYRI gets into your eyes. If you accidentally get KLISYRI into your eyes, flush them with water and get medical care as soon as possible.
- Local skin reactions are common but can also be severe during treatment with KLISYRI. Call your healthcare provider if you develop any local skin reactions including redness, flaking or scaling, crusting, or swelling that is more severe, or if you get blisters, peeling, pus, ulcers, or breakdown of your skin.

The most common side effects of KLISYRI include: itching or pain in the treatment area.

These are not all of the possible side effects of KLISYRI. Call your doctor for medical advice about side effects. You may report side effects to FDA at [1-800-FDA-1088](tel:1-800-FDA-1088).

**Please see full Prescribing Information, including Patient Information.**



**KLISYRI**<sup>®</sup>

tirbanibulin ointment

FIELD THERAPY REDEFINED

Visit [www.klisyri.com](http://www.klisyri.com)  
to learn more.



KLISYRI<sup>®</sup> is a registered trademark of Almirall, LLC.  
© 2024 Almirall, LLC. 101 Lindenwood Dr., Ste 400  
Malvern, PA 19355. [almirall.us](http://almirall.us). All rights reserved.  
US-TIRBA-2400073 07/2024